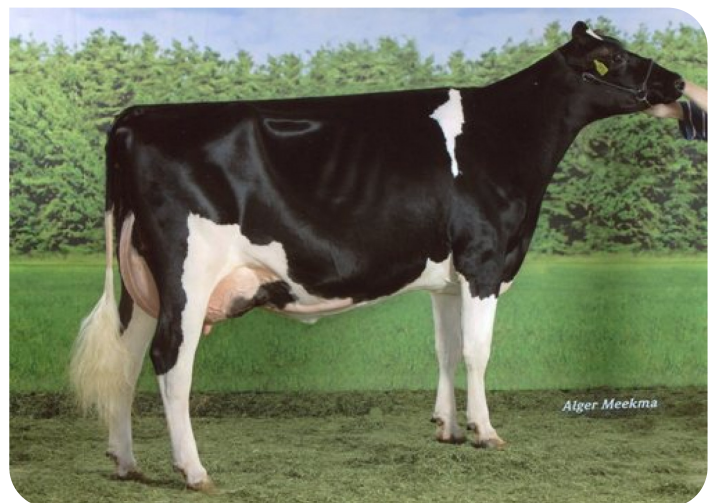




*Alger Meekma*

- + Top conformation
- + International cow family
- + Full brother of 2008 National Intern. Champion
- + Very low SCS
- + Calving ease bull
- + aAa 312

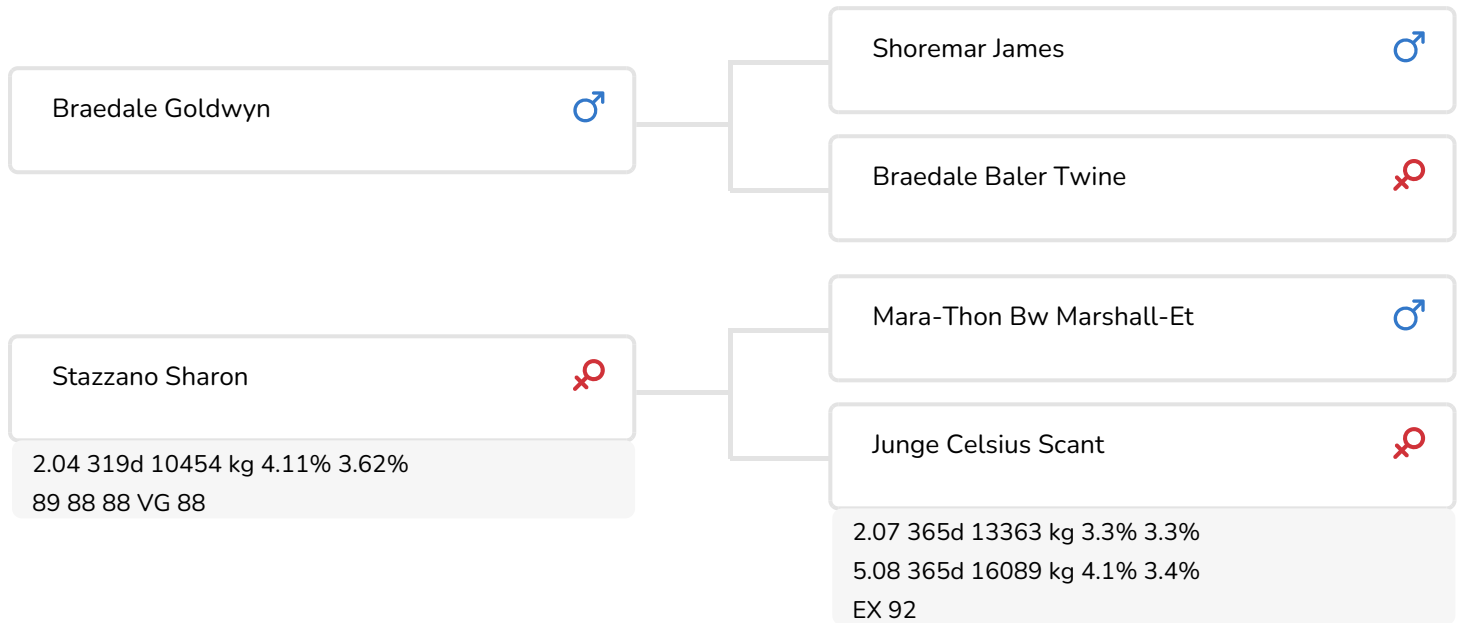


*Alger Meekma*

Southland Goldwyn Sharon 2 (VG 89)  
(full-sister of Goldwave)

## BULL INFORMATION

Name	Southland Goldwave	Date of birth	2008-02-13
Herdbook number	NL 487668014	Gestation length	282
A.l.-code	36737	Kappa Casein	AA
aAa code	312	Beta Casein	A2/A2
colour	ZB	Cow family	Sharon
Breed	100% HF	Straw colour	Beige



Southland Dellia 191 (s. Goldwave)  
Owner: Southland Holsteins, Teteringen (NL)



De Kroon Jantje 112 (s. Goldwave)  
Owner: Mr. C. Krooneman, 'T Harde (NL)

BREEDING VALUES		
NVI	INET	Lgv.
-237	-380	-445

PRODUCTIEVERERVING					
% Rel	Daughters	Herds			
94	96	69			
KG milk	% Fat	% Protein	KG fat	KG protein	Inet
-678	-0.36	-0.3	-58	-48	-380

FUNCTIONAL TRAITS		
Calving ease		100
Vitality	▬	99
Beef index	▬	96

DAUGHTERS		
Fertility	▬	93
NR	▬	96
Calving interval	▬	93
Mat. calving process	▬	95
Mat.Vitality	▬	90
Persistency		100
Maturity rate	▬	95
Udder health		100
Somatic cell count	▬	99
Milking speed	▬	96
Robot efficiency	▬	91
Robot interval	▬	95
Robot habituation	▬	97
Claw health	▬	92
Temperament	▬	93
Body weight	▬	95

TYPE SCORE		
% Rel	Daughters	Herds
84	26	21

TYPE SCORE		
Frame	▬	97
Udder	▬	99
Feet & Legs	▬	98
Total Score	▬	97
Stature		100
Chest width	▬	95
Body depth	▬	102
Angularity	▬	101
Condition	▬	96
Rump Angle	▬	97
Rump Width	▬	94
Rear legs Rear view		100
Rear leg Set	▬	102
Foot Angle	▬	98
Front feet orientation	▬	95
Locomotion	▬	98
For udder attachment	▬	101
Front teat placement	▬	97
Teat length	▬	102
Udder depth	▬	97
Rear udder height	▬	98
Central ligament	▬	95
Rear teat placement	▬	95
Udder balans	▬	95



Udder of Southland Dellia 191 (s. Goldwave)  
Owner: Southland Holsteins, Teteringen (NL)

