



Alger Meekma

Breeder: Mts. van Dijk - de Bruin, Giessenburg

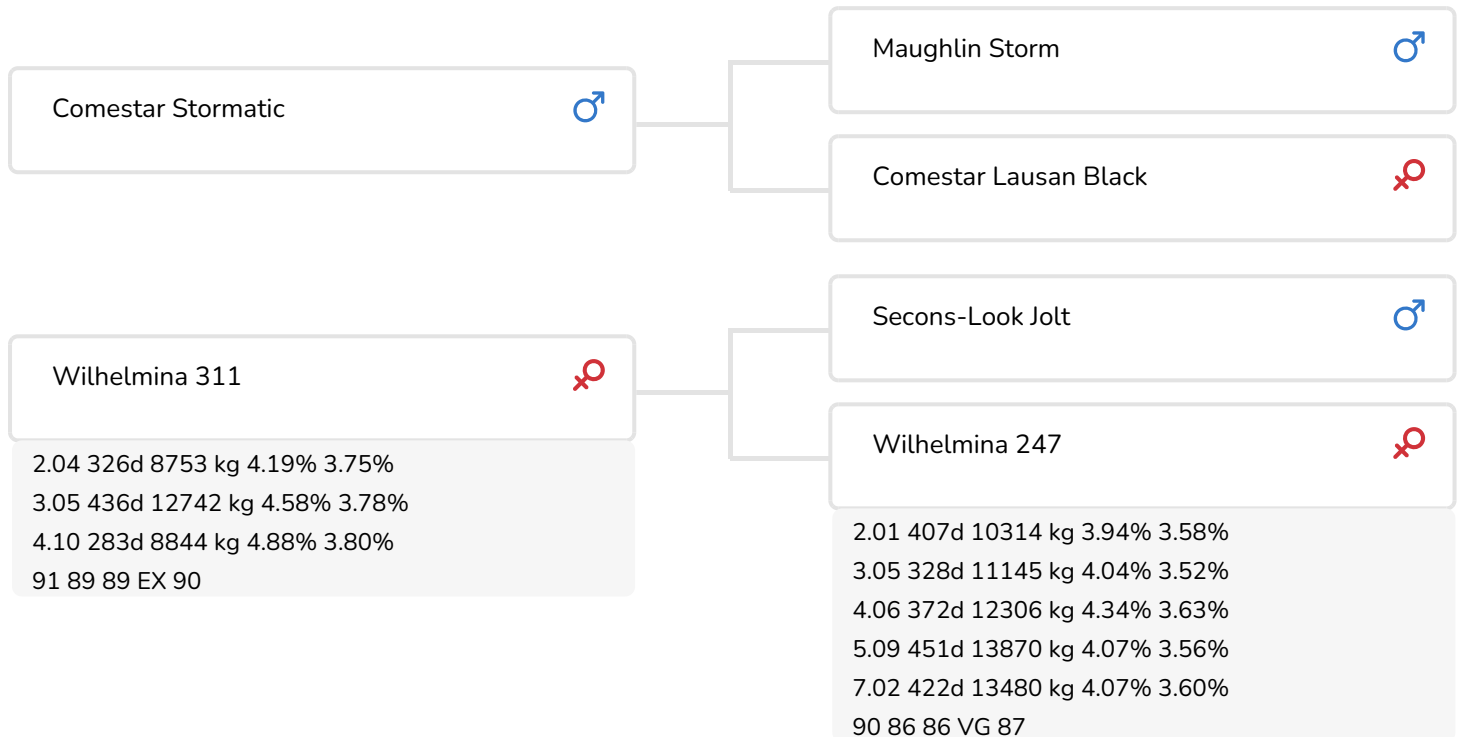


Alex Arkink

Wilhelmina 311 (EX 90)
(dam of Image)

BULL INFORMATION

Name	Slingeman's Image	Date of birth	2003-09-04
Herdbook number	NL 362485949	Gestation length	291
A.I.-code	36561	Kappa Casein	AA
aAa code	165243	Beta Casein	
colour	ZB	Cow family	Wilhelmina
Breed	100% HF	Straw colour	Transparant



The beautiful dairy character Slingeman Image (Stormatic x Jolt x Ideal) is a bull with top conformation. Image's pedigree contains only super conformation bulls in as well the sire- as the dam line.

Image sire - Stormatic, is the son of proven bull Storm of the Lauri Sheik family. Stormatic has an allround acceptable production with super conformation. The scores are positive for all traits which makes him an absolute super bull.

Protein and top conformation is describing the dam line of Image. The Willhemina's have already 6 generation of VG or EX cows in a row. The most famous cow in this line is Wilhemina 179, the with 88 VG points grand dam of Image. This Marlin daughter is the dam of proven bull Slingeman 63. Slingeman 63 is the sire of Geertje 287 (EX 94), the Dutch National champion in 1998. The most famous cow of the Wilhemina family is Wilhemina 311, Image's mother. The daughter of Jolt won several championships on local shows and Wilhemina 311 managed already a couple times to be present on the Dutch National show. On the production side she combines high productions with high protein levels.

BREEDING VALUES

NVI	INET	Lgv.
-193	-520	114

PRODUCTIEVERERVING

% Rel	Daughters	Herds			
99	650	299			
KG milk	% Fat	% Protein	KG fat	KG protein	Inet
-1497	-0.27	-0.1	-86	-61	-520

FUNCTIONAL TRAITS

Calving ease		92
Vitality		100
Beef index		98

DAUGHTERS

Fertility		98
NR		102
Calving interval		95
Mat. calving process		100
Mat.Vitality		98
Persistency		99
Maturity rate		94
Udder health		96
Somatic cell count		94
Milking speed		102
Robot efficiency		95
Robot interval		95
Robot habituation		104
Claw health		99
Temperament		93
Body weight		89

TYPE SCORE

% Rel	Daughters	Herds
97	154	101

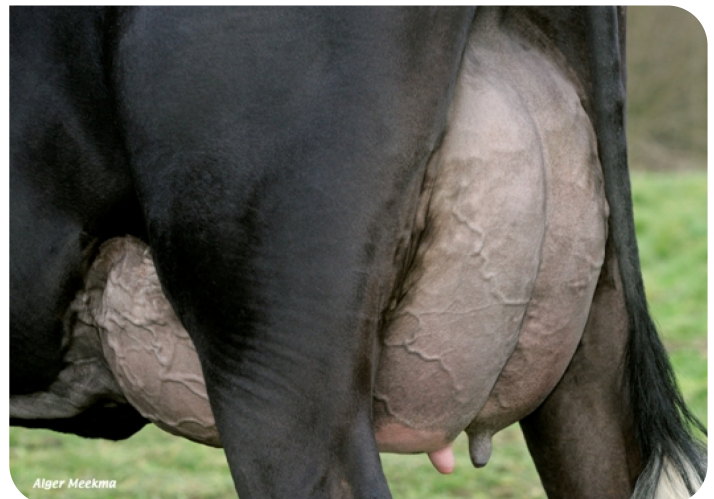
TYPE SCORE

Frame		90
Udder		96
Feet & Legs		94
Total Score		90
Stature		93
Chest width		87
Body depth		95
Angularity		96
Condition		93
Rump Angle		96
Rump Width		95
Rear legs Rear view		97
Rear leg Set		105
Foot Angle		95
Front feet orientation		96
Locomotion		95
For udder attachment		99
Front teat placement		90
Teat length		100
Udder depth		96
Rear udder height		96
Central ligament		93
Rear teat placement		89
Udder balans		98



Pineut (VG 87) (s. Image)

Owner: Melkveebedrijf Engelen v.o.f. (NL)



Udder (VG 89) of Pineut (s. Image)

Owner: Melkveebedrijf Engelen v.o.f. (NL)

