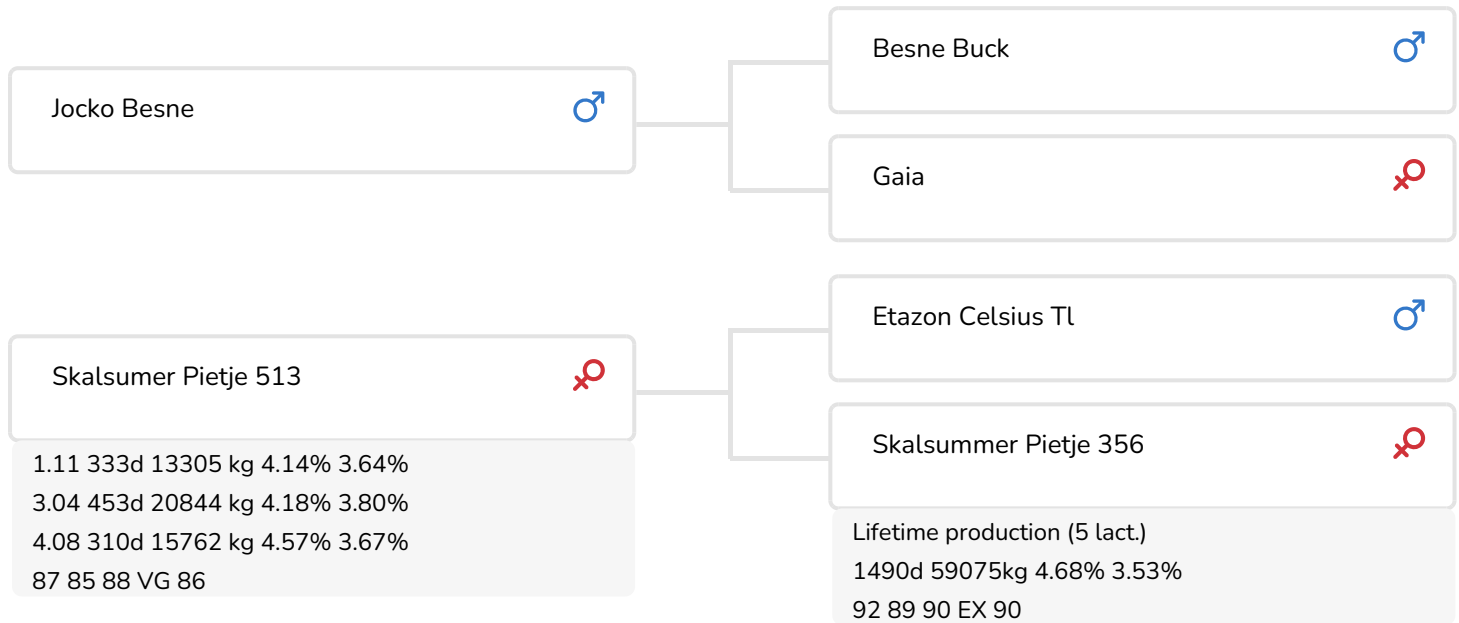




Skalsumer Pietje 513 (VG 86)
(dam of Jorryn)

BULL INFORMATION

| | | | |
|-----------------|------------------|------------------|------------|
| Name | Skalsumer Jorryn | Date of birth | 2001-03-14 |
| Herdbook number | NL 330874052 | Gestation length | 281 |
| A.l.-code | 36487 | Kappa Casein | AA |
| aAa code | 435162 | Beta Casein | A2/A2 |
| colour | ZB | Cow family | Pietje |
| Breed | 100% HF | Straw colour | Geel |



The very well developed, beautiful lined bull Skalsumer Jorryn (Jocko Besne x Celsuis x Sunny Boy) has a deep frame with excellent feet & legs. Jorryn combines the top of france genes (Jocko Besne) with the best genes from the Netherlands (the Pietjes family (Sunny Boy)).

Jorryn's sire, Jocko Besne, is a French bull and used all around the world. Jocko daughters have a lot of milk with narrow fat/protein ratio in combination with very good conformation. His conformation doesn't have any weak points and he scores excellent for dairy strength and feet & legs.

When we discuss super cow families than for sure we'll discuss the Pietjes family, Jorryn's dam line. The brooding cow in this family is Pietje 356, granddam of Jorryn. This Pietje's family is also known as the "Sunny Boy" family with strong points such as strength (VG 86 x EX 90 x VG 89 x EX 90) and productivity.

One of the most interesting cows from Jorryn's dam line, over the last couple of years, is granddam Pietje 356. This cow produces a lot milk with very good conformation and is able to pass this on to her daughters. These daughters from Jabot (1x), Celsuis (1x), Rudolph (3x), Mattie G (1x) and Convincer (1x) scored as heifer all between VG 85 and VG 88 with lactation values of 110 and higher. The best...

BREEDING VALUES

| | | |
|-----|------|------|
| NVI | INET | Lgv. |
| -75 | -45 | -185 |

PRODUCTIEVERERVING

| | | | | | |
|---------|-----------|-----------|--------|------------|------|
| % Rel | Daughters | Herds | | | |
| 99 | 6655 | 1992 | | | |
| KG milk | % Fat | % Protein | KG fat | KG protein | Inet |
| 210 | -0.28 | -0.06 | -18 | 2 | -45 |

FUNCTIONAL TRAITS

| | | |
|--------------|--|-----|
| Calving ease | | 103 |
| Vitality | | 102 |
| Beef index | | 98 |

DAUGHTERS

| | | |
|----------------------|--|-----|
| Fertility | | 100 |
| NR | | 103 |
| Calving interval | | 97 |
| Mat. calving process | | 91 |
| Mat.Vitality | | 100 |
| Persistency | | 101 |
| Maturity rate | | 97 |
| Udder health | | 89 |
| Somatic cell count | | 89 |
| Milking speed | | 102 |
| Robot efficiency | | 101 |
| Robot interval | | 101 |
| Robot habituation | | 98 |
| Claw health | | 101 |
| Temperament | | 105 |
| Body weight | | 88 |

TYPE SCORE

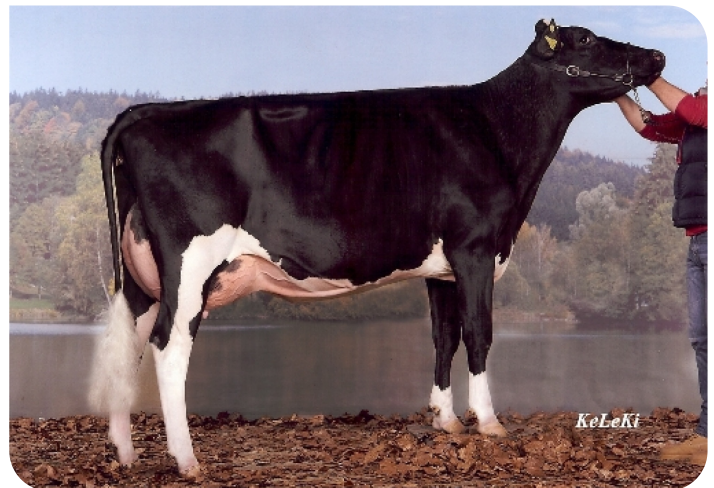
| | | |
|-------|-----------|-------|
| % Rel | Daughters | Herds |
| 99 | 2126 | 767 |

TYPE SCORE

| | | |
|------------------------|--|-----|
| Frame | | 91 |
| Udder | | 91 |
| Feet & Legs | | 99 |
| Total Score | | 90 |
| Stature | | 90 |
| Chest width | | 89 |
| Body depth | | 95 |
| Angularity | | 98 |
| Condition | | 90 |
| Rump Angle | | 99 |
| Rump Width | | 96 |
| Rear legs Rear view | | 96 |
| Rear leg Set | | 100 |
| Foot Angle | | 98 |
| Front feet orientation | | 91 |
| Locomotion | | 100 |
| For udder attachment | | 86 |
| Front teat placement | | 97 |
| Teat length | | 102 |
| Udder depth | | 85 |
| Rear udder height | | 99 |
| Central ligament | | 98 |
| Rear teat placement | | 96 |
| Udder balans | | 104 |



Metha 400 (VG 86) (s. Jorryn)
 (2nd lactation)
 Owner: Mts. L.C. & E.L. & M.E.J. Kramer - Zuurbier,
 Assendelft (NL)



Jeni (s. Jorryn)
 Owner: Mr. Cédric Sieber, Oberdorf (CH)



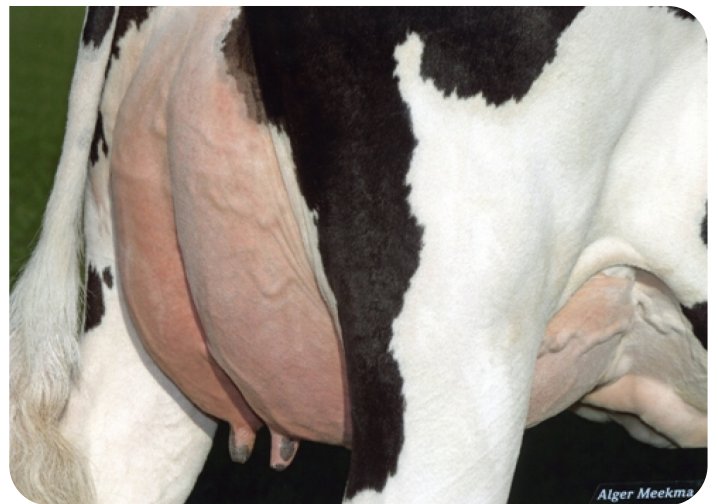
Metha 400 (VG 86) (s. Jorryn)
 (1st lactation)
 Owner: Mts. L.C. & E.L. & M.E.J. Kramer - Zuurbier,
 Assendelft (NL)



Daughtergroup Jorryn NRM 2006



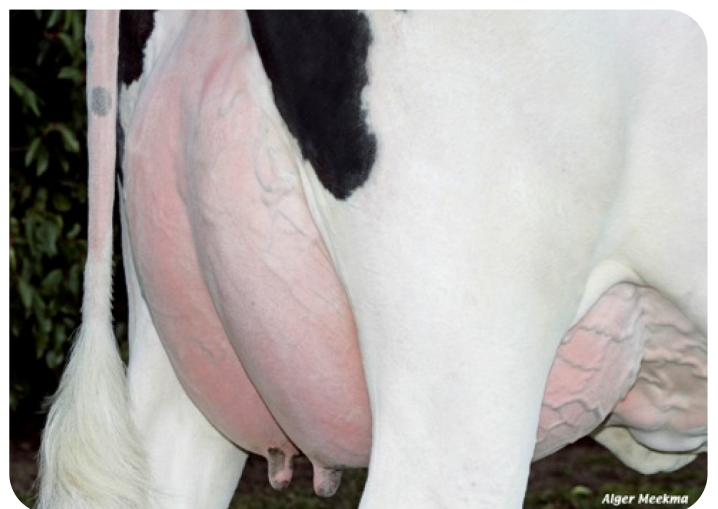
Claudia 13 (VG 85) (s. Jorryn)
 Owner: Mts. Schenning v.d. Heyden, Bladel (NL)



Udder (VG 87) of Claudia 13 (s. Jorryn)
 Owner: Mts. Schenning v.d. Heyden, Bladel (NL)



Fleurtje 1 (VG 85) (s. Jorryn)
 Breeder: Mts. G.A. & P. van Beest, Lienden (NL)



Udder (VG 85) of Fleurtje 1 (s. Jorryn)
 Breeder: Mts. G.A. & P. van Beest, Lienden (NL)