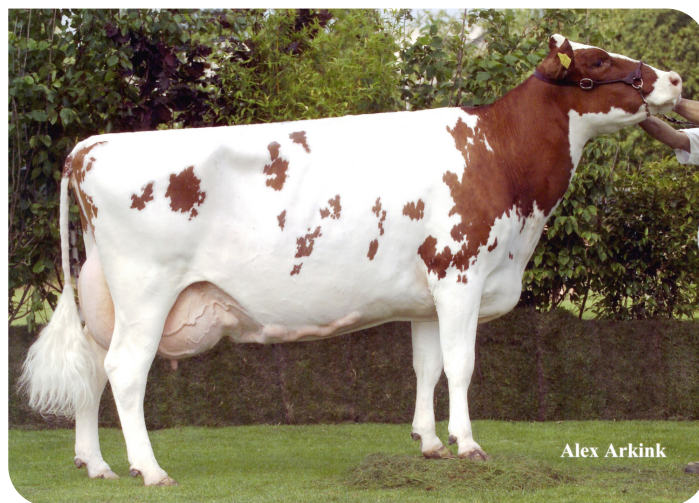




Alger Meekma

- + Spencer x Andries x Sunny Boy
- + Calving ease sire
- + High contents
- + Good heifers
- + From the well known F-line
- + aAa 243516

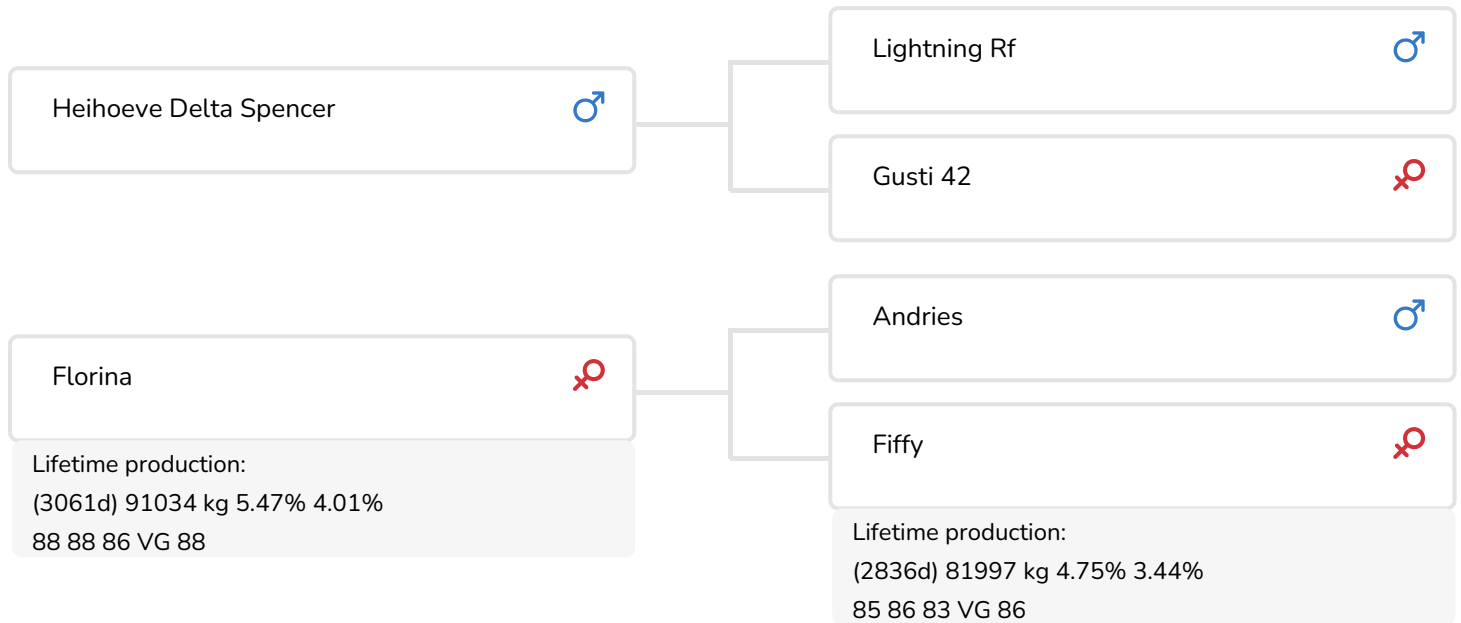


Alex Arkink

Flora (EX 91)
(half-sister of Frontier)

BULL INFORMATION

Name	Red Frontier	Date of birth	2008-02-07
Herdbook number	NL 486606842	Gestation length	274
A.l.-code	36736	Kappa Casein	AB
aAa code	243516	Beta Casein	A1/A2
colour	RB	Cow family	Florina
Breed	100% HF	Straw colour	Paars



Retraitehoeve Selma 239 (s. Frontier)
Owner: Mts. Willemse-Meulepas, Beers (NL)



Bertha 186 (s. Frontier)
Owner: Mr. D. Lenstra, Ossenzijl (NL)

BREEDING VALUES

NVI	INET	Lgv.
-109	-59	-316

PRODUCTIEVERERVING

% Rel	Daughters	Herds			
97	261	139			
KG milk	% Fat	% Protein	KG fat	KG protein	Inet
-1434	1.12	0.44	12	-22	-59

FUNCTIONAL TRAITS

Calving ease		105
Vitality		102
Beef index		102

DAUGHTERS

Fertility		100
NR		100
Calving interval		101
Mat. calving process		96
Mat.Vitality		97
Persistency		96
Maturity rate		103
Udder health		98
Somatic cell count		97
Milking speed		91
Robot efficiency		94
Robot interval		89
Robot habituation		110
Claw health		91
Temperament		92
Body weight		95

TYPE SCORE

% Rel	Daughters	Herds
92	55	43

TYPE SCORE

Frame		97
Udder		94
Feet & Legs		90
Total Score		89
Stature		95
Chest width		95
Body depth		92
Angularity		88
Condition		98
Rump Angle		98
Rump Width		103
Rear legs Rear view		92
Rear leg Set		97
Foot Angle		101
Front feet orientation		92
Locomotion		91
For udder attachment		94
Front teat placement		92
Teat length		101
Udder depth		99
Rear udder height		95
Central ligament		91
Rear teat placement		89
Udder balans		95



Gerrie 95 (s. Frontier)
Owner: Mr. A. Bouwman, Nieuwleusen (NL)



Gerrie 95 (s. Frontier)
Owner: Mr. A. Bouwman, Nieuwleusen (NL)



Florina (VG 88)
(dam of Frontier)