



Alger Meekma

Breeder: Fok- en melkveebedrijf K.I. Samen B.V., Grashoek

- +** Outcross
- +** Maternal line with high lifetime production and good conformation
- +** Calving ease bull
- +** Beta casein A2/A2

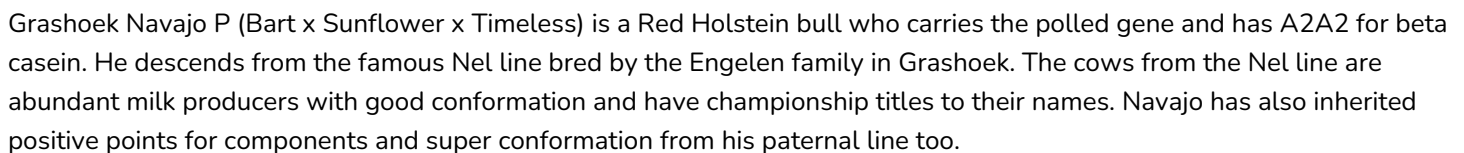


Alger Meekma

Grashoek Nordika 27 (s. Navajo)

Owner.: Fok- en melkveebedrijf K.I. SAMEN, Grashoek

Name	Grashoek Navajo P	Date of birth	2019-02-05
Herdbook number	NL 565515564	Gestation length	277
A.l.-code	361179	Kappa Casein	AB
PFW code	C	Beta Casein	A2/A2
aAa code	246	Cow family	Nel
colour	RB	Straw colour	Rose
Breed	100% HF		



Navajo's maternal line, the Nel family, guarantees incredible milk production. In addition, all the cows in this line have outstanding and very attractive conformation. Proof of this is the championship title won by Nel 61 (EX 90), the great-great grandam of Navajo, in Wanroy. Nel 61 is also the most prominent and influential figure in this pedigree. She produced more than 90,000 kg of milk and was frequently flushed. One of the most distinguished and balanced daughters of Nel 61 is Nel 96 by Lucrative. Ranking VG 89 and with life production...

BREEDING VALUES

NVI	INET	Lgv.
31	-21	795

PRODUCTIEVERERVING

% Rel	Daughters	Herds			
91	109	60			
KG milk	% Fat	% Protein	KG fat	KG protein	Inet
388	-0.3	-0.13	-10	2	-21

FUNCTIONAL TRAITS

Calving ease		102
Vitality		99
Beef index		103

DAUGHTERS

Fertility		103
NR		106
Calving interval		102
Mat. calving process		100
Mat.Vitality		97
Persistency		103
Maturity rate		107
Udder health		100
Somatic cell count		102
Milking speed		99
Robot efficiency		100
Robot interval		98
Robot habituation		102
Claw health		97
Temperament		106
Body weight		101

TYPE SCORE

% Rel	Daughters	Herds
81	13	9

TYPE SCORE

Frame		102
Udder		102
Feet & Legs		90
Total Score		97
Stature		104
Chest width		99
Body depth		101
Angularity		100
Condition		99
Rump Angle		99
Rump Width		101
Rear legs Rear view		90
Rear leg Set		97
Foot Angle		99
Front feet orientation		99
Locomotion		92
For udder attachment		104
Front teat placement		97
Teat length		104
Udder depth		107
Rear udder height		98
Central ligament		96
Rear teat placement		96
Udder balans		98



Grashoek Nel 139 (PP)
(dam of Navajo (Pp))



Grashoek Nel 118
(grand-dam of Navajo (Pp))



Grashoek Nel 96
(great- grandmother of Navajo (Pp))