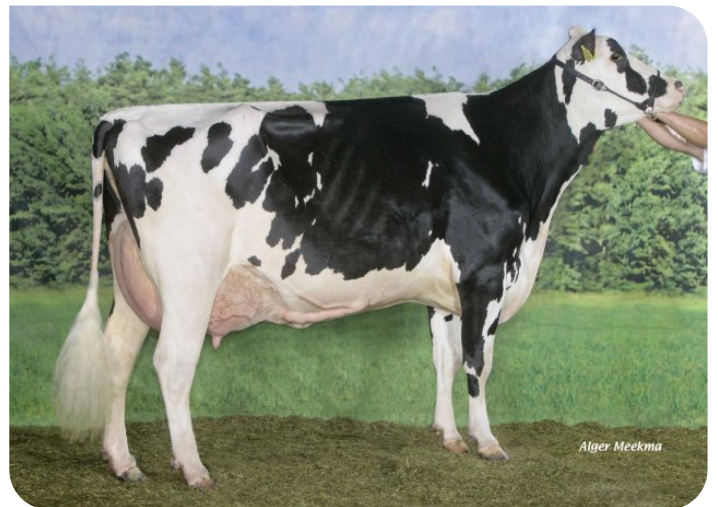




Alger Meekma

Breeder: Schep Holsteins Friesland BV, Boijl

- + Outcross
- + Red carrier
- + Heifers with wide chests
- + Very good feet and legs

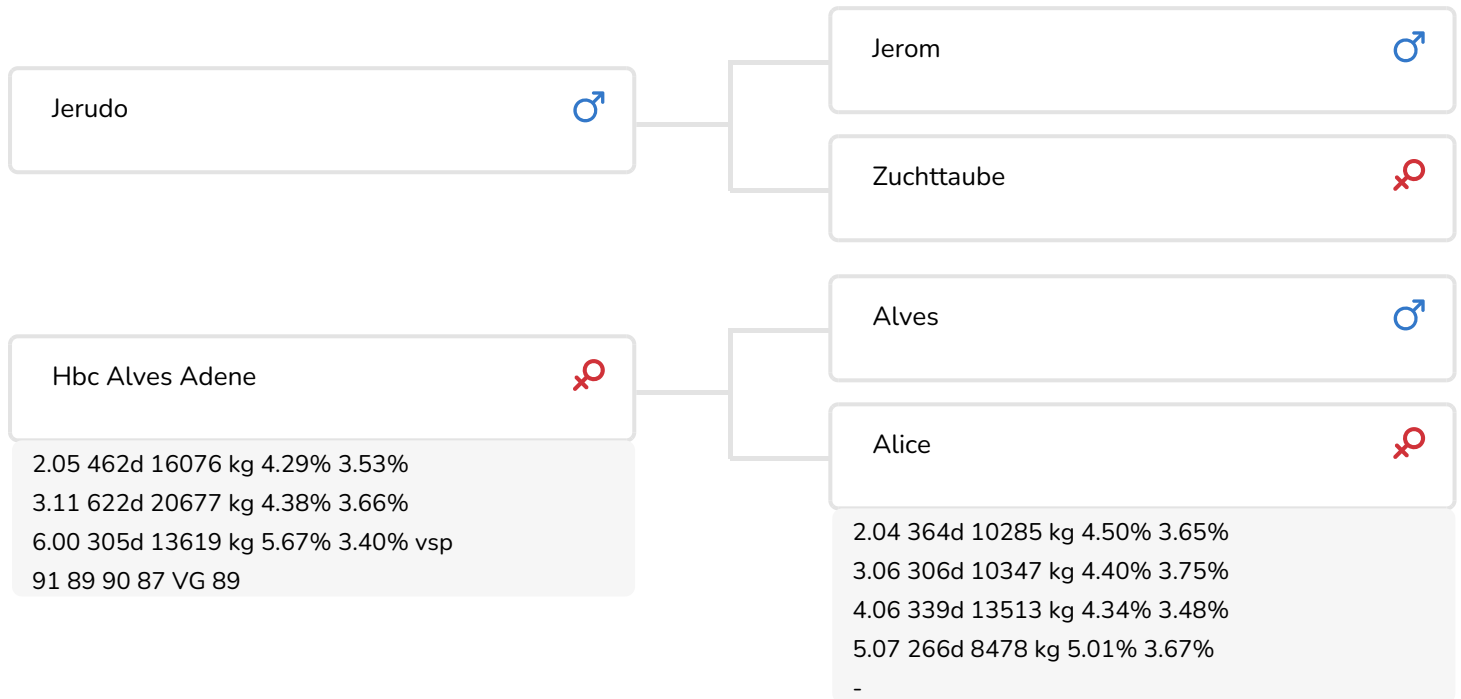


Alger Meekma

HBC Alves Adene (VG 89)
(dam of FaWi Pirlo rf)

BULL INFORMATION

Name	Farmers Wish HBC Pirlo rf	Date of birth	2011-12-27
Herdbook number	NL 538153368	Gestation length	284
A.l.-code	36902	Kappa Casein	AA
aAa code	516423	Beta Casein	A1/A2
colour	ZB	Cow family	Adene
Breed	100% HF	Straw colour	Groen



Boukje 130 (s. FaWi Pirlo rf)
 Owner: Mts. G. & C.A.L. van Drie-Poelma, Bedum (NL)



Boukje 131 (s. FaWi Pirlo rf)
 Owner: Mts. G. & C.A.L. van Drie-Poelma, Bedum (NL)

BREEDING VALUES

NVI	INET	Lgv.
-182	-226	-415

PRODUCTIEVERERVING

% Rel	Daughters	Herds			
99	1550	563			
KG milk	% Fat	% Protein	KG fat	KG protein	Inet
-793	0.07	-0.07	-28	-33	-226

FUNCTIONAL TRAITS

Calving ease		98
Vitality		105
Beef index		105

DAUGHTERS

Fertility		98
NR		96
Calving interval		101
Mat. calving process		95
Mat.Vitality		93
Persistency		93
Maturity rate		94
Udder health		100
Somatic cell count		98
Milking speed		104
Robot efficiency		104
Robot interval		94
Robot habituation		104
Claw health		87
Temperament		101
Body weight		94

TYPE SCORE

% Rel	Daughters	Herds
98	243	109

TYPE SCORE

Frame		97
Udder		90
Feet & Legs		94
Total Score		90
Stature		96
Chest width		97
Body depth		98
Angularity		100
Condition		96
Rump Angle		99
Rump Width		89
Rear legs Rear view		97
Rear leg Set		109
Foot Angle		91
Front feet orientation		102
Locomotion		97
For udder attachment		94
Front teat placement		97
Teat length		95
Udder depth		93
Rear udder height		89
Central ligament		98
Rear teat placement		99
Udder balans		91



HBC Jerudo Alves AD (fullsister of FaWi Pirlo rc)
Owner: Melkveebedrijf Grashoek b.v., Grashoek (NL)

