



*Alger Meekma*

- + Top allround bull
- + 7 generations VG or higher in maternal line
- + Big plus for protein
- + Favourable fat protein ratio
- + Overall conformation figures

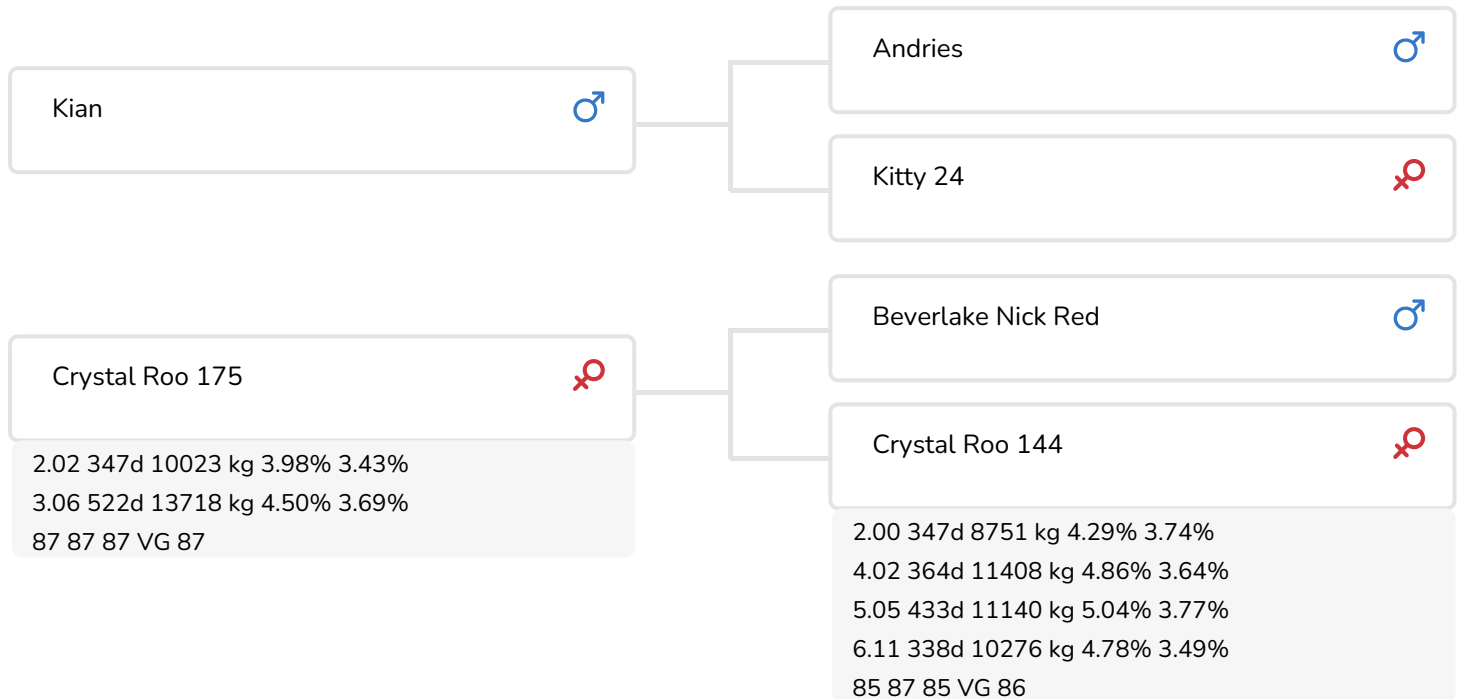


*Alger Meekma*

Crystal Roo 175 (VG 87)  
(dam of Red Reflex)

## BULL INFORMATION

Name	Crystal Red Reflex	Date of birth	2003-07-25
Herdbook number	NL 362035030	Gestation length	28
A.l.-code	36559	Kappa Casein	AB
aAa code	135	Beta Casein	A1/A1
colour	RB	Cow family	Roo
Breed	87% HF	Straw colour	Wit



Daughtergroup Red Reflex NRM 2008



Bernarda 58 (VG 87) (s. Red Reflex)  
Owner: Mr. G.J. Griemelink, Geesteren (NL)

## BREEDING VALUES

NVI	INET	Lgv.
-190	-350	-149

## PRODUCTIEVERERVING

% Rel	Daughters	Herds			
99	1646	702			
KG milk	% Fat	% Protein	KG fat	KG protein	Inet
-1037	-0.07	-0.1	-52	-45	-350

## FUNCTIONAL TRAITS

Calving ease		99
Vitality		96
Beef index		95

## DAUGHTERS

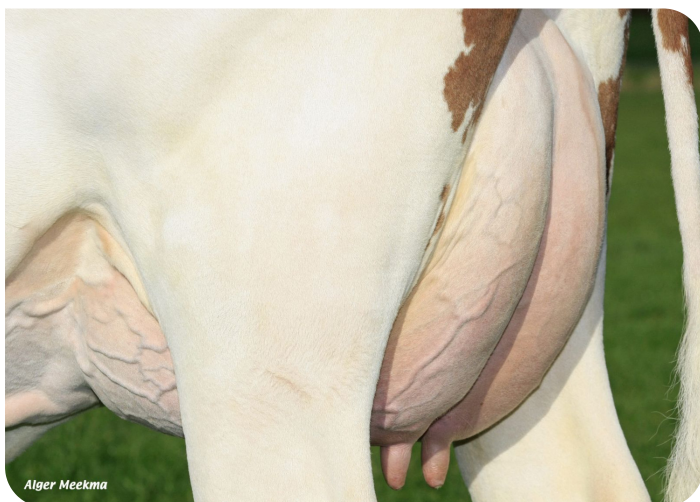
Fertility		100
NR		95
Calving interval		103
Mat. calving process		96
Mat.Vitality		99
Persistency		94
Maturity rate		100
Udder health		97
Somatic cell count		97
Milking speed		93
Robot efficiency		88
Robot interval		92
Robot habituation		106
Claw health		96
Temperament		99
Body weight		102

## TYPE SCORE

% Rel	Daughters	Herds
99	526	252

## TYPE SCORE

Frame		98
Udder		92
Feet & Legs		97
Total Score		93
Stature		97
Chest width		104
Body depth		99
Angularity		94
Condition		105
Rump Angle		96
Rump Width		97
Rear legs Rear view		98
Rear leg Set		97
Foot Angle		102
Front feet orientation		99
Locomotion		97
For udder attachment		92
Front teat placement		99
Teat length		103
Udder depth		93
Rear udder height		91
Central ligament		99
Rear teat placement		95
Udder balans		94



Udder of Bernarda 58 (s. Red Reflex)  
Owner: Mr. G.J. Griemelink, Geesteren (NL)



Heidi 47 (s. Red Reflex)  
Owner: Mr. H. Stienen, Ospel (NL)



Roosje 275 (GP84) (s. Red Reflex)