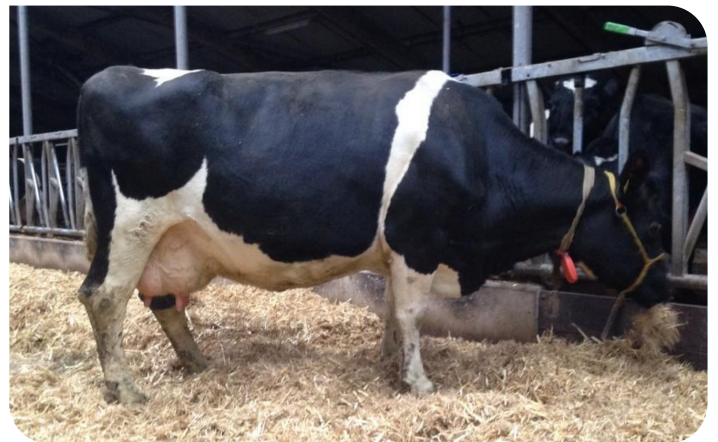




*Alger Meekma*

Breeder: Mts. W. en S. van Dam - Faber, Wyns

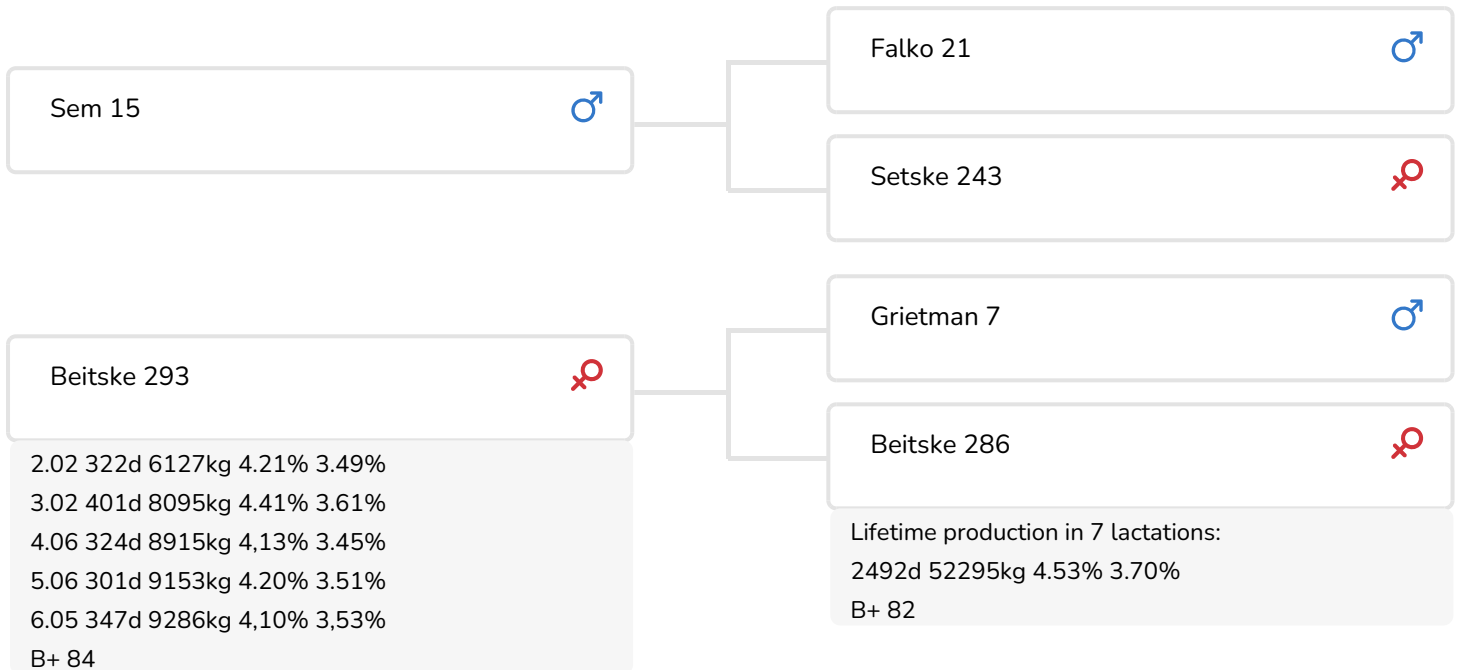
- + Good longevity and fertility in maternal and paternal lines
- + Well developed bull with good locomotion
- + Sire Sem 15 was used as a breeding bull, descends from the Setske cow family
- + Maternal line has been part of the herd for more than a century
- + The Beitskes are a robust cow family, who produce easily with good body condition
- + Productions exceeds the farm average, cows still youthful but with high longevity
- + Cow family has produced many breeding bulls
- + Beta casein A2/A2



Beitske 293  
Dam of Bouwe 9, in dry period for 6th lactation

## BULL INFORMATION

Name	Bouwe 9	Date of birth	2019-02-07
Herdbook number	NL 640009267	Gestation length	283
A.l.-code	361207	Kappa Casein	AA
aAa code	516	Beta Casein	A2/A2
colour	ZB	Cow family	Beitske
Breed	100% FH/BF	Straw colour	Oranje



The Frisian-Dutch bull Bouwe 9 brings a boost to the FH breeding programme at K.I. SAMEN, but he is also an undoubtedly interesting bull for the global arena. Both his maternal and paternal pedigrees are characterised by super longevity and good fertility. Bouwe 9 was bred by Mts. van Dam-Faber. The focus on their farm is grazing, and their herd's production is primarily based on meadow grass.

Bouwe 9 was sired by Sem 15, who originates from the Setske family. Sem 15 was used as the mating bull on the breeder's farm. Dam Setske 243 achieved impressive lifetime production of 46350 kg milk with 4.51% fat and 3.71% protein in 2355 days. In addition, Setske 243 has excellent conformation with a beautiful udder and strong legs. This outstanding durability is also reflected in Sem 15's grand dam and great grand dam.

Bouwe 9's maternal line, the Beitskes, has a history of more than a century at the Mts. van Dam-Faber farm. The first K.I. bulls such as Bernard, Binne and Bennie also descended from the Beitske cow family. Dam Beitske 293 can be described as a genuine example of a no-nonsense, hard working cow, who maintains her body condition and production levels with ease. Her production in kilos of milk far exceeds the farm average. Her breeders also describe grand dam Beitske 286, a...