



*Alger Meekma*

Breeder: Melkveebedrijf Batenburg, Giethoorn

- + High milk yield, many kg of fat and protein
- + Enormous width throughout the cows
- + Very good udders and feet & legs
- + Red Carrier, outcross for R&W Holstein



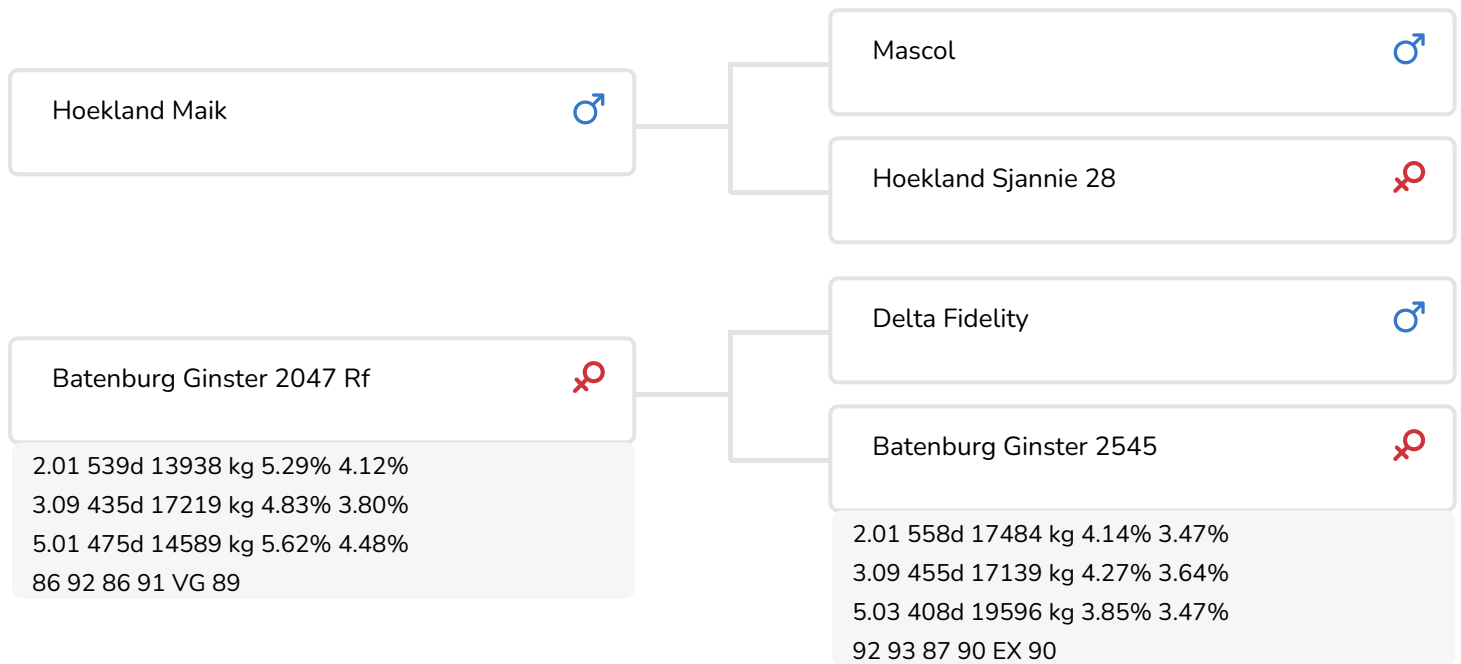
*Alger Meekma*

Sonja 98 (s. Geronimo)

Owner: Klein Wassink J.B. en Alefs I.M.H., Ruurlo (NL)

## BULL INFORMATION

Name	Batenburg Geronimo	Date of birth	2013-12-14
Herdbook number	NL 947608424	Gestation length	277
A.I.-code	36985	Kappa Casein	AB
PFW code	B	Beta Casein	A1/A1
aAa code	561432	Cow family	Ginster
colour	ZB	Straw colour	Beige
Breed	100% HF		



Etta 128 (l) and Etta 131 (r) (s. Geronimo)  
 Owner: R. & E. v.d. Ven-Scheepens, Vlagtwedde (NL)

## BREEDING VALUES

NVI	INET	Lgv.
-158	-63	-368

## PRODUCTIEVERERVING

% Rel	Daughters	Herds			
99	2332	695			
KG milk	% Fat	% Protein	KG fat	KG protein	Inet
603	-0.45	-0.24	-18	-2	-63

## FUNCTIONAL TRAITS

Calving ease		92
Vitality		93
Beef index		96

## DAUGHTERS

Fertility		98
NR		97
Calving interval		98
Mat. calving process		95
Mat.Vitality		96
Persistency		99
Maturity rate		98
Udder health		90
Somatic cell count		87
Milking speed		103
Robot efficiency		99
Robot interval		104
Robot habituation		99
Claw health		92
Temperament		101
Body weight		99

## TYPE SCORE

% Rel	Daughters	Herds
99	398	149

## TYPE SCORE

Frame		97
Udder		94
Feet & Legs		101
Total Score		96
Stature		95
Chest width		102
Body depth		97
Angularity		94
Condition		100
Rump Angle		95
Rump Width		101
Rear legs Rear view		103
Rear leg Set		104
Foot Angle		97
Front feet orientation		104
Locomotion		101
For udder attachment		97
Front teat placement		96
Teat length		107
Udder depth		97
Rear udder height		97
Central ligament		95
Rear teat placement		101
Udder balans		103



Etta 131 (s. Geronimo)

Owner: R. & E. v.d. Ven-Scheepens, Vlagtwedde (NL)



Udder of Etta 131 (s. Geronimo)

Owner: R. & E. v.d. Ven-Scheepens, Vlagtwedde (NL)



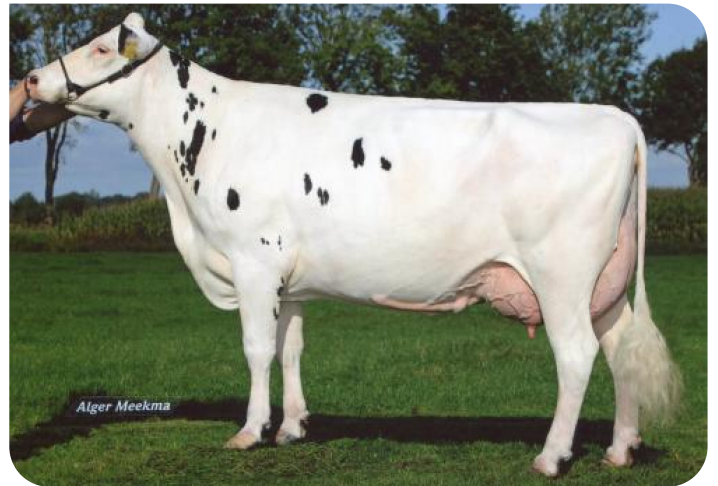
Etta 128 (s. Geronimo)  
Owner: R. & E. v.d. Ven-Scheepens, Vlagtwedde (NL)



Bots Gusta 181 (s. Geronimo rc)  
Owner: Melkveebedrijf Bots, Rekken (NL)



Batenburg Ginster 2047 RF (VG 89)  
(dam of Geronimo rc)



Batenburg Ginster 2545 (EX 90)  
(grand dam of Geronimo rc)